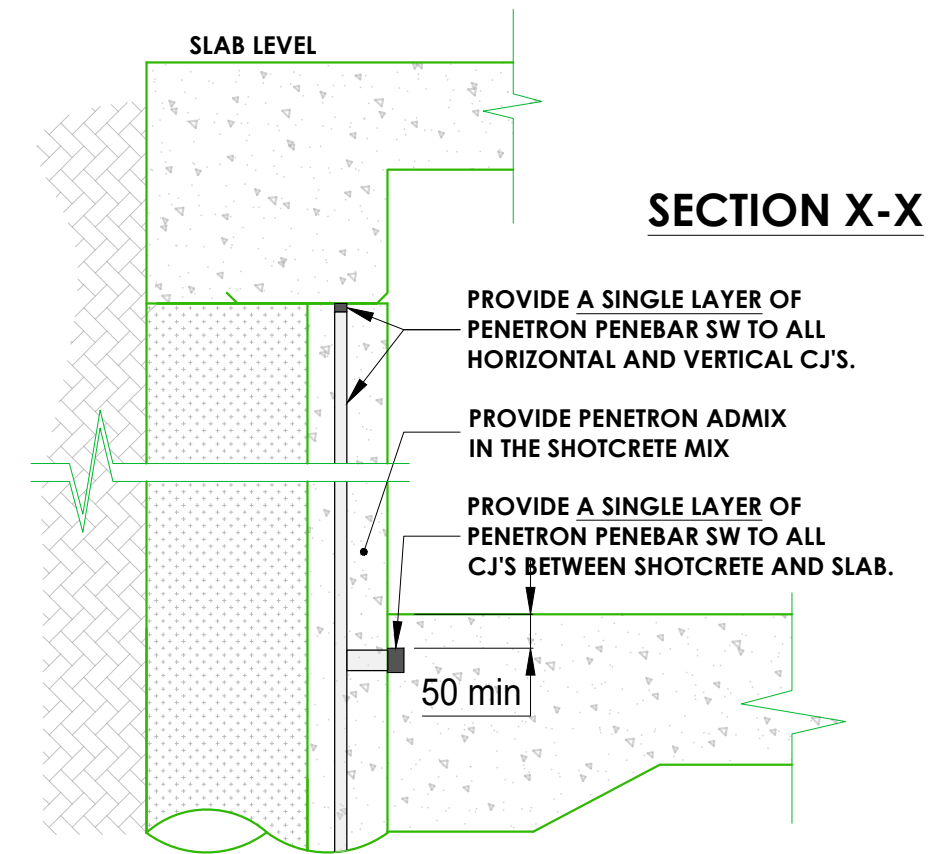
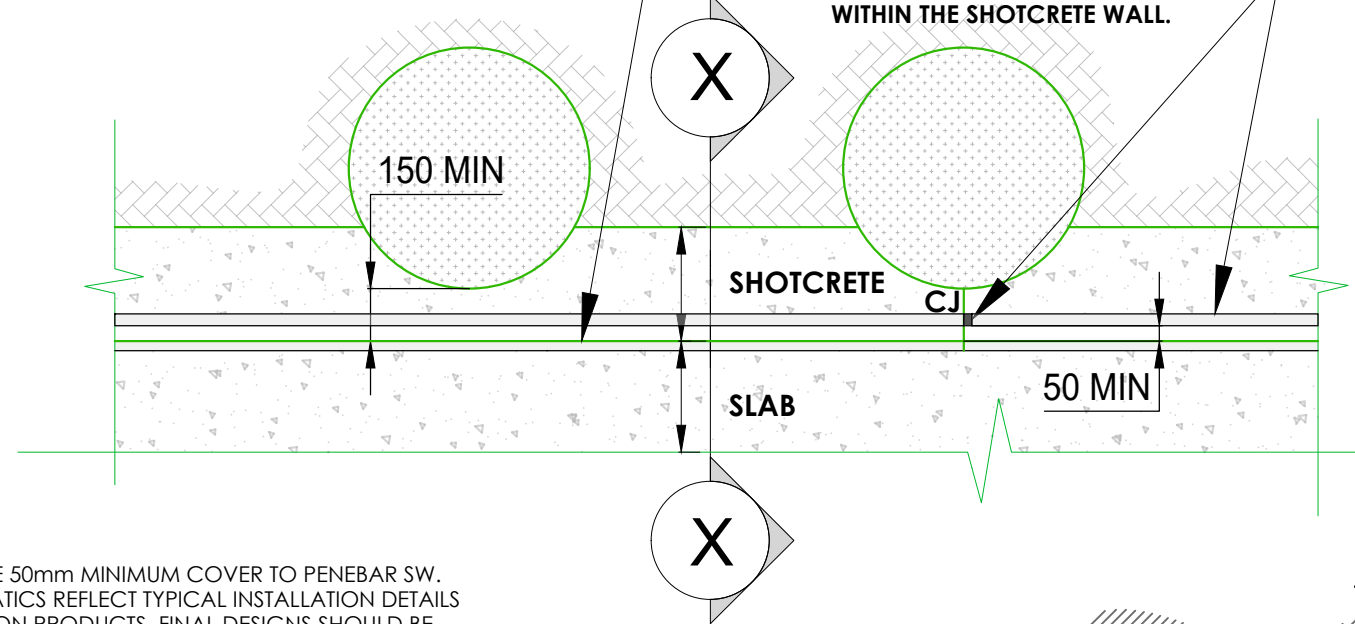


# SOLDIER PILE / SHOTCRETE

ABOVE WATER TABLE

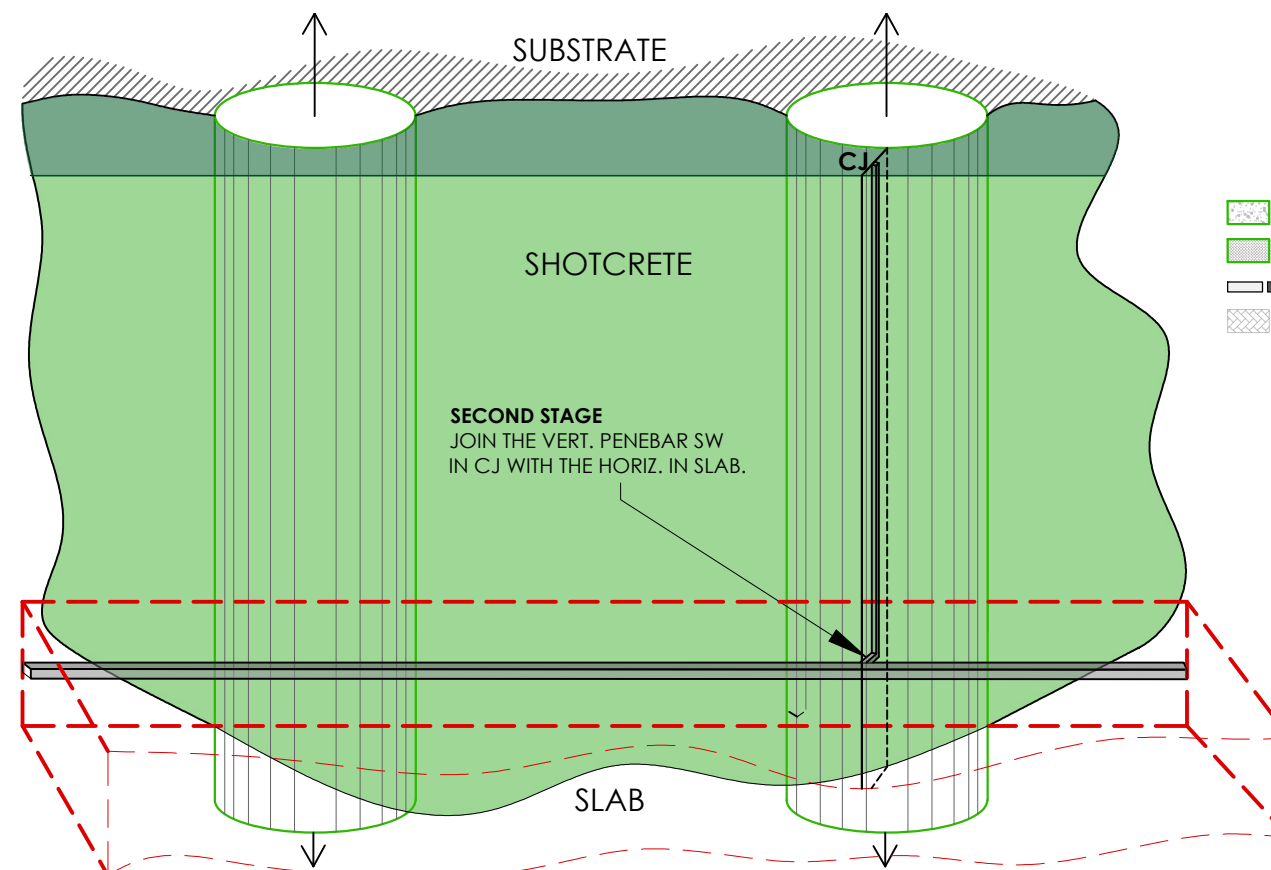
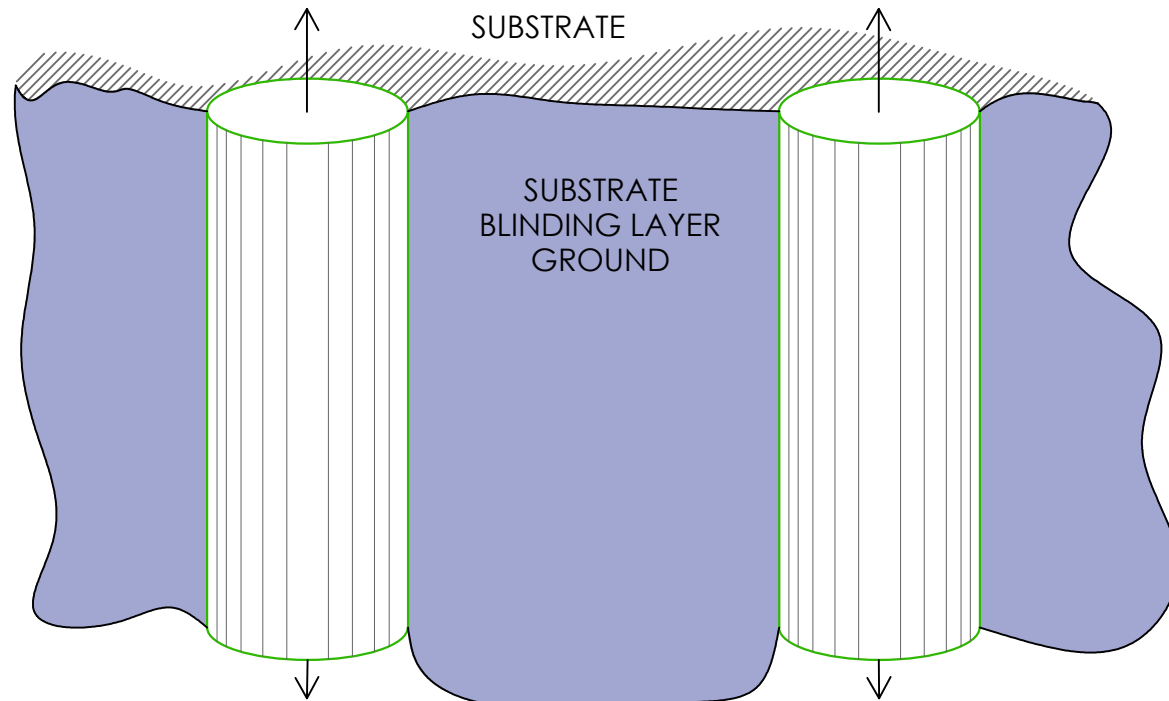
EXTERNAL WALL DETAIL  
 PROVIDE A SINGLE LAYER OF PENETRON PENEBAR SW TO CJ'S BETWEEN SHOTCRETE AND SLAB.

PROVIDE A SINGLE LAYER OF PENETRON PENEBAR SW TO ALL HORIZONTAL AND VERTICAL CJ'S WITHIN THE SHOTCRETE WALL.



## NOTES:

1. PROVIDE 50mm MINIMUM COVER TO PENEBAR SW.
2. SCHEMATICS REFLECT TYPICAL INSTALLATION DETAILS OF PENETRON PRODUCTS. FINAL DESIGNS SHOULD BE PROVIDED BY A QUALIFIED ENGINEER OR ARCHITECT IN CONFORMANCE WITH ALL APPLICABLE BUILDING CODES.



## LEGEND: -

- PENETRON ADMIXTURE SB.
- OPTIONAL PENETRON ADMIX SB.
- PENEBAR SW.
- BACKFILL / GROUND



## SOLDIER PILES - SHOTCRETE ABOVE WATER TABLE - EXTERNAL

## TYPICAL DETAIL

DWG: PDN010

REFER TO THE DETAILS ABOVE FOR  
 DIFFERENT PRODUCTS REQUIRED

PENETRON AUSTRALIA  
 SUITE 3, 49 HEATHCOTE ROAD  
 MOOREBANK, NSW, 2170 AUSTRALIA

REVISION: 03

DRAWING NOT TO SCALE

COPYRIGHT OF PENETRON AUSTRALIA

DATE: 21/10/2021