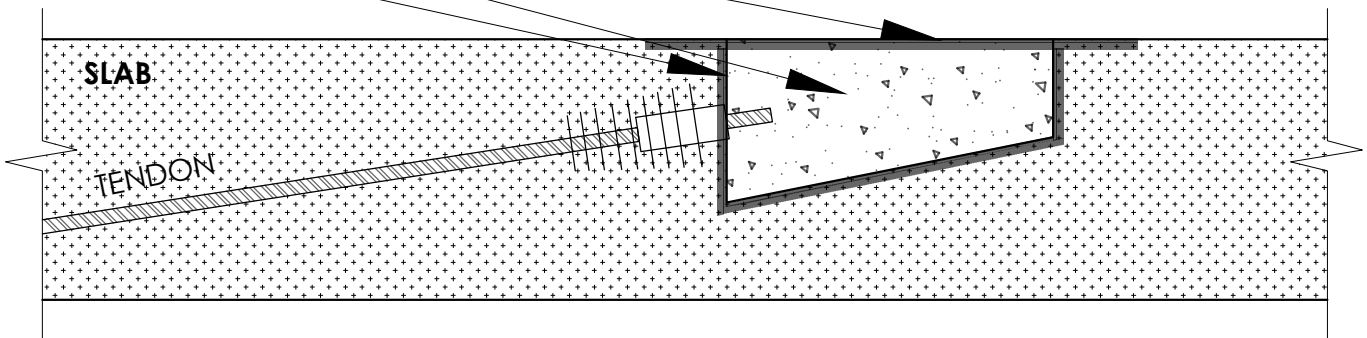


**Step1:** Brush Penetron slurry on all internal surfaces.

**Step2:** In-fill the pan with Penecrete Mortar.

**Step3:** Brush Penetron Slurry over the entire pan & 100mm past the joints.

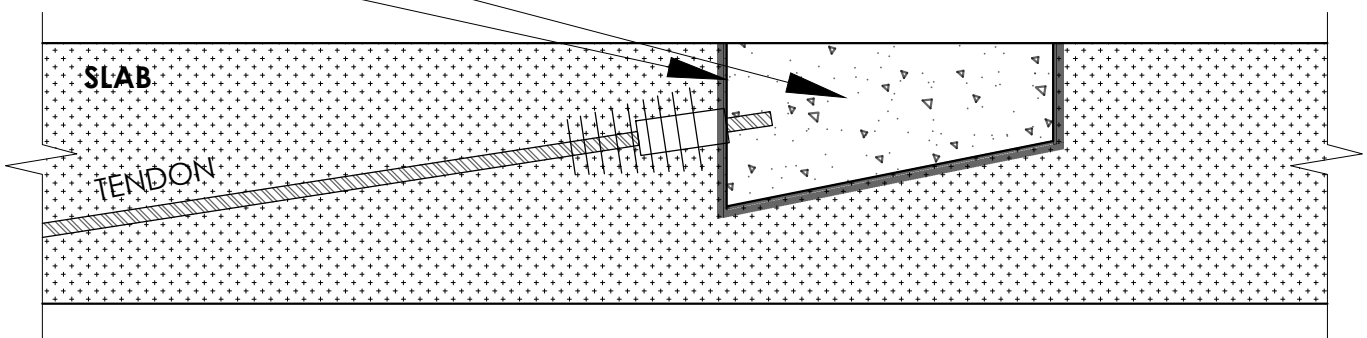


### **OPTION 1: INFILLING OF POST-TENSIONING PANS**

Refer to the technical datasheets and brochures  
of the Penetron Slurry and the Penecrete Mortar.

**Step1:** Apply 3 coats of Blockseal internally.

**Step2:** In-fill the pan with a non-shrink grout supplied by others.



### **OPTION 2: INFILLING OF POST-TENSIONING PANS**

Refer to the technical datasheets and brochures  
of the Blockseal cementitious membrane.