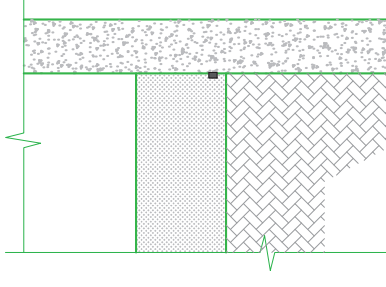


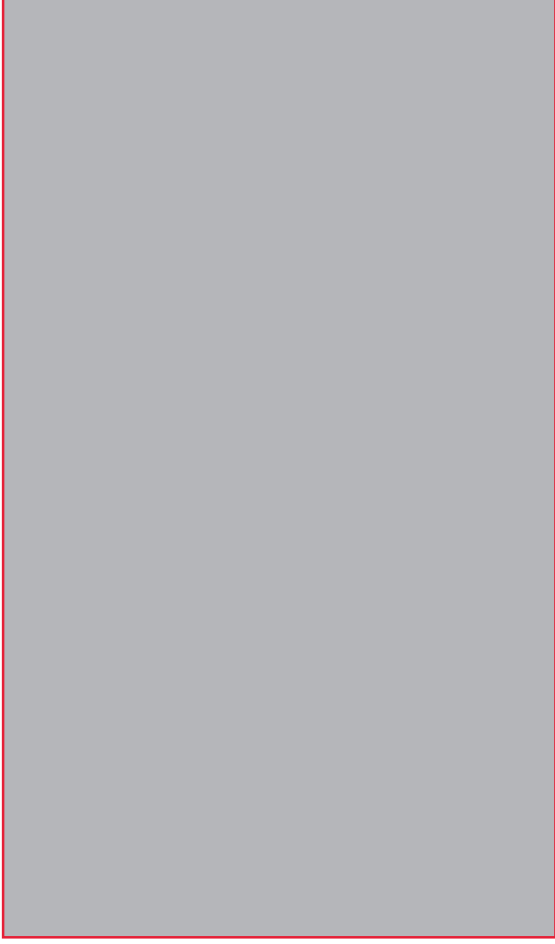
DETAIL A

ONE LAYER OF PENEBAR SW &
PENETRON ADMIX IN SLAB AND WALL.



DETAIL D

ONE LAYER OF PENEBAR SW &
PENETRON ADMIX IN SLAB AND WALL.



NOTES:

1. PROVIDE 50mm MINIMUM COVER TO PENEBAR SW.
2. SCHEMATICS REFLECT TYPICAL INSTALLATION DETAILS OF PENETRON PRODUCTS. FINAL DESIGNS SHOULD BE PROVIDED BY A QUALIFIED ENGINEER OR ARCHITECT IN CONFORMANCE WITH ALL APPLICABLE BUILDING CODES.

LEGEND: -

 PENETRON ADMIXTURE SB.

 PENEBAR SW.



 BACKFILL / GROUND.

ABOVE WATER TABLE - CONSTRUCTION JOINTS
WALL TO SLAB - GROUND AND SUSPENDED SLABS.

DWG: PDN004

REVISION: 02

DATE: 31/01/2020

DRAWING NOT TO SCALE

TYPICAL DETAIL

PENETRON AUSTRALIA
SUITE 3.49 HEATHCOTE ROAD
MOOREBANK, NSW, 2170 AUSTRALIA

COPYRIGHT OF PENETRON AUSTRALIA

