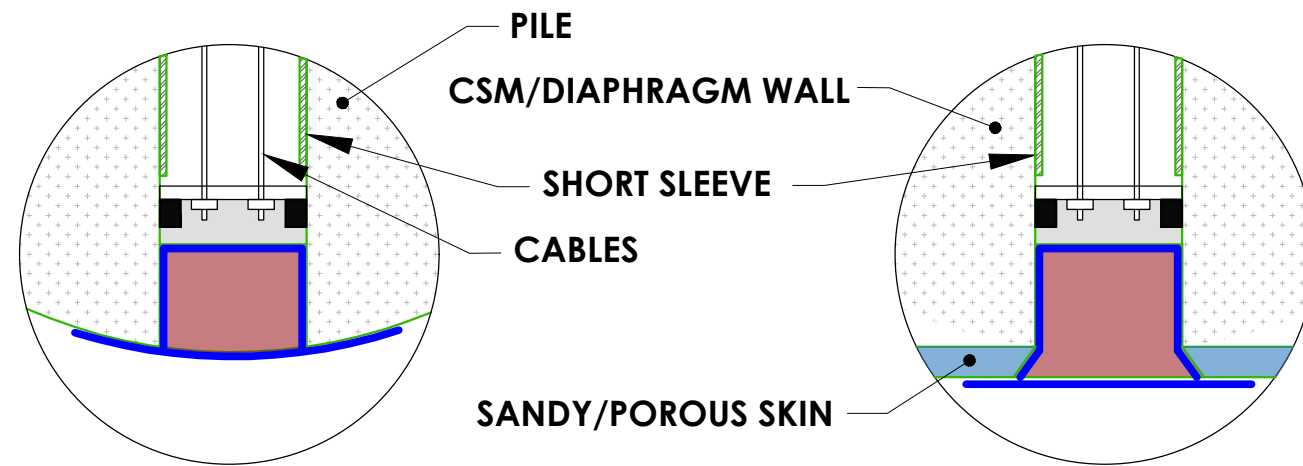
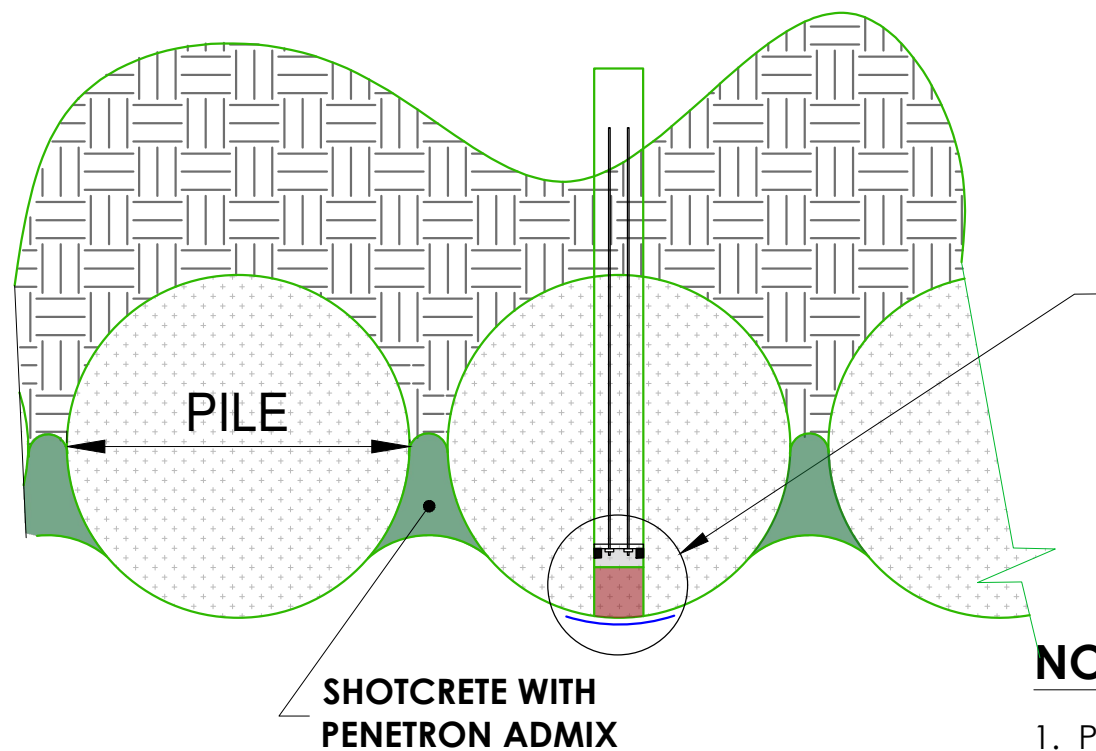


DETAIL A:
FULL LENGTH SLEEVE
THROUGH PILES



DETAIL B:
SHORT SLEEVE
THROUGH PILES

DETAIL C:
ANCHOR POINTS' REMEDIATION
THROUGH CSM/DIAPHRAGM WALLS



NOTES:

1. PROVIDE 50mm MINIMUM COVER TO PENEBAR SW.
2. SCHEMATICS REFLECT TYPICAL INSTALLATION DETAILS OF PENETRON PRODUCTS. FINAL DESIGNS SHOULD BE PROVIDED BY A QUALIFIED ENGINEER OR ARCHITECT IN CONFORMANCE WITH ALL APPLICABLE BUILDING CODES.

LEGEND: -

- PENETRON ADMIXTURE SB.
- OPTIONAL PENETRON ADMIX SB.
- PENEBAR SW.
- BACKFILL / GROUND



**ANCHOR POINT REMEDIATION THROUGH PILES
BELOW WATER TABLE**

DWG: PDN032

REVISION: 01

DATE: 09/09/2021

REFER TO THE DETAILS ABOVE FOR
THE DIFFERENT DETAILS

DRAWING NOT TO SCALE

TYPICAL DETAIL

PENETRON AUSTRALIA
SUITE 3, 49 HEATHCOTE ROAD
MOOREBANK, NSW, 2170 AUSTRALIA

COPYRIGHT OF PENETRON AUSTRALIA